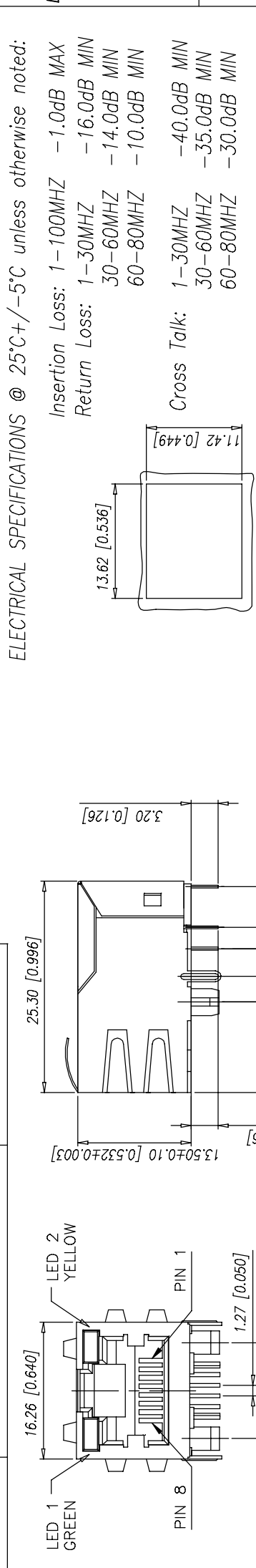


REV.	ECN NO	DESCRIPTION	REVISED	DATE
R01		New Release	Kelly	2009.6.10

原料号为: MJ003-B211-RSL11T2
 变更后料号为: MJ3A-B211-RSL15T022-1

CATEGORY	DESCRIPTION	P/N #
CONNECTOR	RJ45+Transformer 10/100Mbps with LED	MJ3A-B211-RSL15T022-1

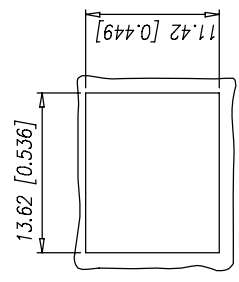


ELECTRICAL SPECIFICATIONS @ 25°C+/-5°C unless otherwise noted:

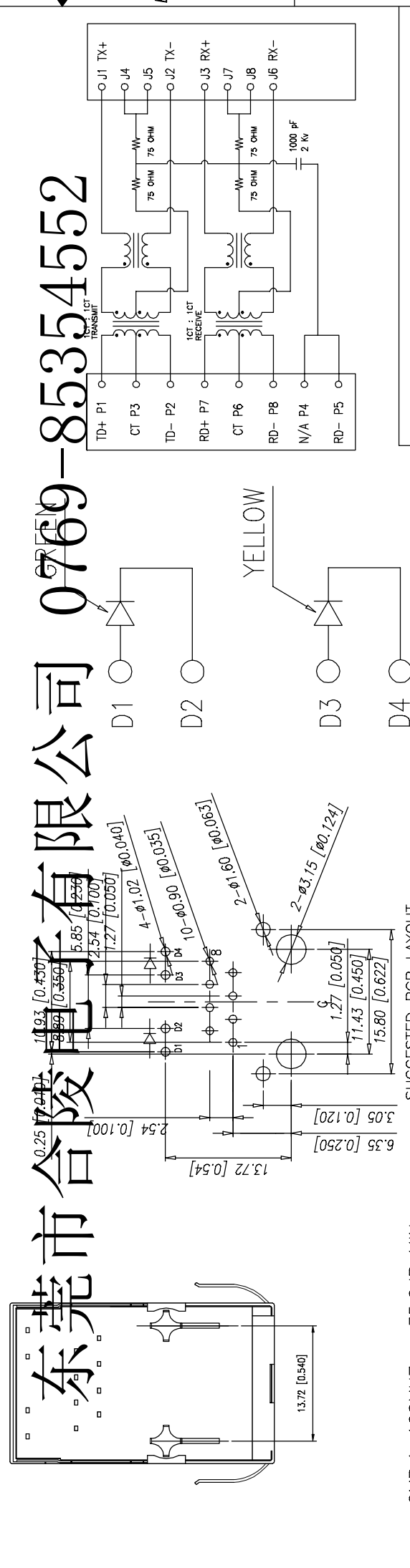
Insertion Loss: 1-100MHZ -1.0dB MAX
 30-60MHZ -16.0dB MIN
 60-80MHZ -14.0dB MIN
 60-80MHZ -10.0dB MIN

Return Loss: 1-30MHZ -40.0dB MIN
 30-60MHZ -35.0dB MIN
 60-80MHZ -30.0dB MIN

Cross Talk: 1-30MHZ -40.0dB MIN
 30-60MHZ -35.0dB MIN
 60-80MHZ -30.0dB MIN



RECOMMENDED
 PANEL CUTOUT DIMENSION



东莞市合陵电子有限公司 0769-85354552

CMR:1-100MHZ -35.0dB MIN	Product Drawing
Hi-Pot: 1500v AC 6S 1mA	DongGuan Heling Electronic Co.,LTD
OCL:350uH MIN @ 100KHZ 100mV 8mA DC	SCALE:1/1 UNIT: mm
Turn Ratio: 1CT:1CT+/-3% Housing Material: PBT Black	SIZE: A3 PAGE:1 OF 1 REV:A
Operating temperature range:0°C to +70°C	APPROVED BY: Tony
Contacts: 0.35mm thick phos bronze plated with 6u' gold in contact area	CHECKED BY: Bill
	PREPARED BY: Kelly
	DWG.NO: HL-TR-001
	CUSTOMER COPY